

Product information Alinio OTA/II/128/54 E 03
TOC: 60 318 04



Representative light channel. Luminaire insert with diagonal lamp configuration. Can be used as individual and first luminaire. 2 length

Application areas

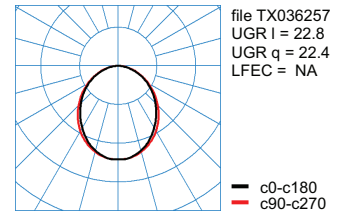
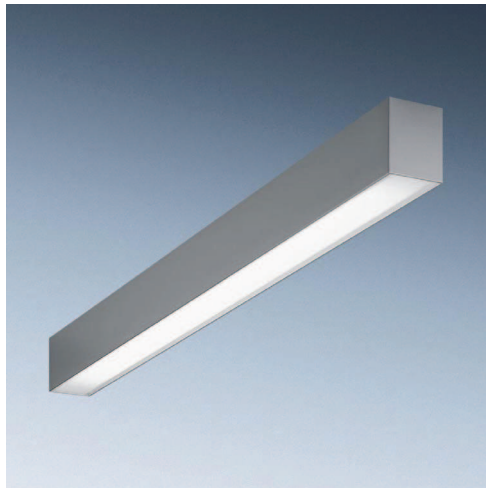
Public areas, corridors, exhibition and sales rooms.

Mounting types

for suspended mounting For ceiling surface-mounting, for ceiling recess mounting

Optical system

direct distribution. Opal PMMA cover. Finely structured surface. Homogeneous illumination of light emission surface with diagonally overlapping lamp configuration.



Colour	silver grey (...03)
Weight	7.179 kg
Degree of protection	IP 20
Safety class	I
LFEC	NA
Cibse	BZ 3/1.75/BZ 4
Socket	G5
LOR	0,31

Luminaire body

Trunking of aluminium. Colour: silver grey (...03). similar to RAL 9006.

Electrical version

With 5-pole plug and socket (type: Wago) for rapid mounting. With electronic control gear, Multi-Lamp.

Specification text

Representative light channel. Luminaire insert with diagonal lamp configuration. Can be used as individual and first luminaire. 2 length for suspended mounting For ceiling surface-mounting, for ceiling recess mounting direct distribution. Opal PMMA cover. Finely structured surface. Homogeneous illumination of light emission surface with diagonally overlapping lamp configuration. Trunking of aluminium. Colour: silver grey (...03). similar to RAL 9006. With 5-pole plug and socket (type: Wago) for rapid mounting. With electronic control gear, Multi-Lamp.



available accessories

TOC:	article
46 917 00	ZAE/01 Ans-Dose eckig vp
46 918 00	ZAE/03
59 680 00	Alinio D1 ZS/1500
59 681 00	Alinio D1 ZS/3000
59 682 00	Alinio D1 ZS/6000
59 683 00	Alinio D1 ZZT/315/1500
59 684 00	Alinio D1 ZZT/315/3000
59 685 00	Alinio D1 ZZT/315/6000
59 686 00	Alinio D1 ZZT/515/1500
59 687 00	Alinio D1 ZZT/515/3000
59 688 00	Alinio D1 ZZT/515/6000
60 354 00	Alinio D1 ZBC II/28/54